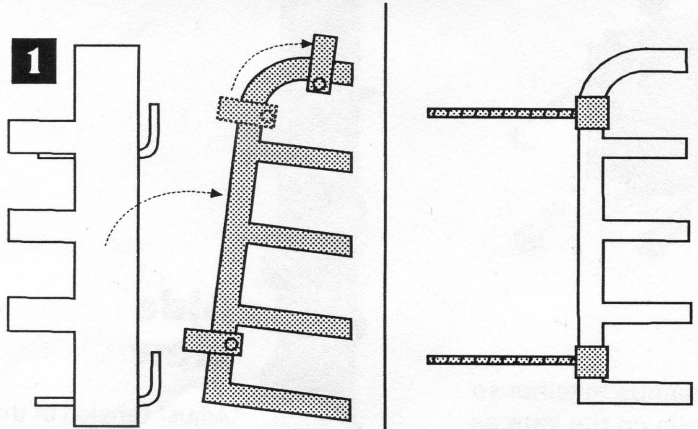


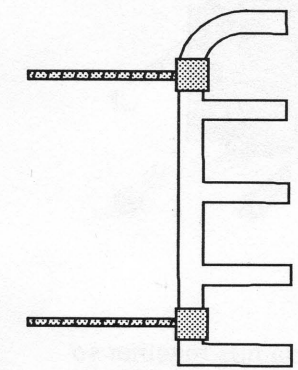
# INSTALLATION INSTRUCTIONS

- Must be installed on free standing post, not a building.
- Gate must not be opened over 90°
- Gate must be level, hinges should be lubed.
- Can also be used as a gate opener (see back of page 2)

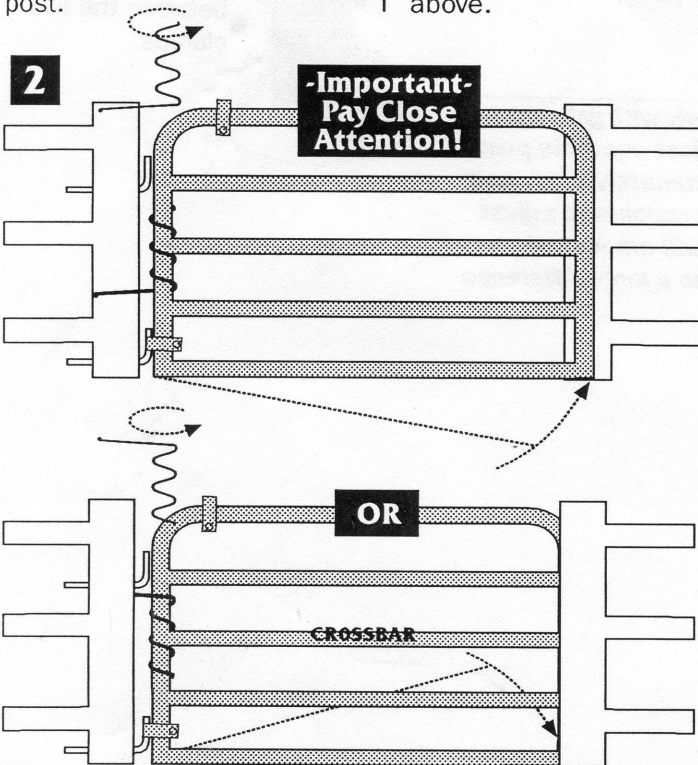
## Standard Pipe Gate



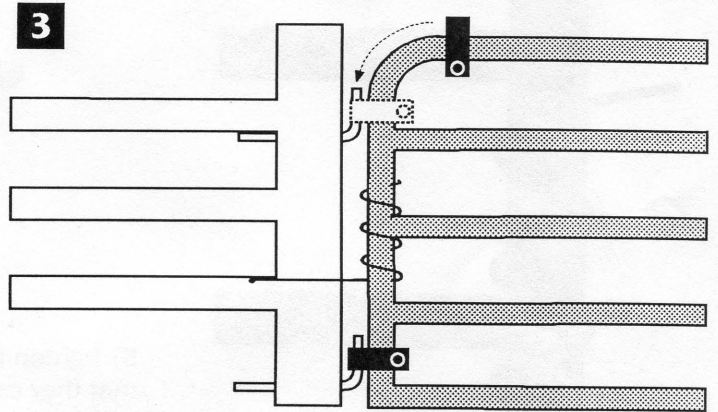
1) Unfasten upper hinge from gate and slide out of the way. Remove gate completely from post.



Note: It is not necessary to remove the hinge if it is like the one shown above.

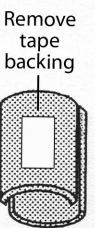


2) The gate is installed differently depending on which way your gate swings. Determine which way your gate swings from the diagram above, and install the Gate Shut per the proper diagram. Screw the entire GATE SHUT down around the gate, so that the spring does not interfere with the hinges. Also, make sure that the spring does not rub against the crossbars of the gate after the clamp is tightened.

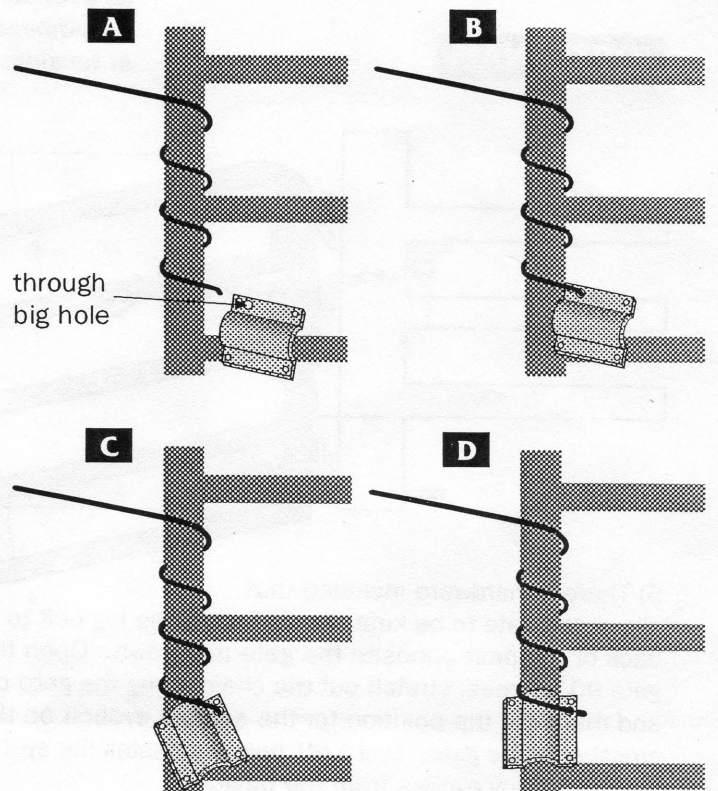


3) Slide upper hinge back in place and tighten.

4) For gates with 1-7/8", 1-3/4", 2" pipe, hook the end of the GATE SHUT through the large hole on one of the steel clamps and fasten the two clamps together fingersnug. On 1-1/2" pipe gates, use spacers provided under the clamps. On 1-5/8" pipe, use one spacer.

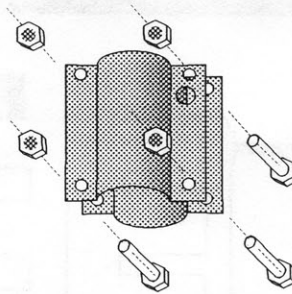
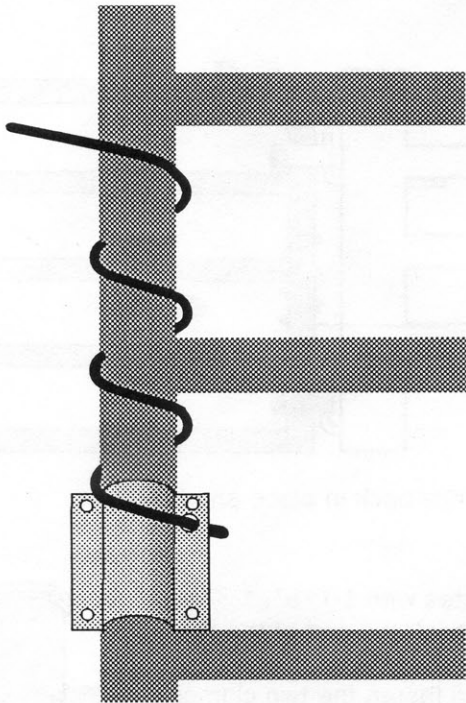


spacers for 1-1/2" pipe



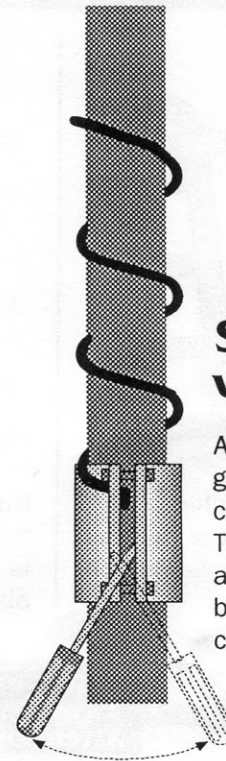
## Standard Pipe Gate (continued)

5



5) Tighten steel clamps together so that they cannot slip on the gate as it is opened. **CAUTION: Gate must be put back on the hinges before turning the clamp. Also, keep children and pets clear of the path swing.**

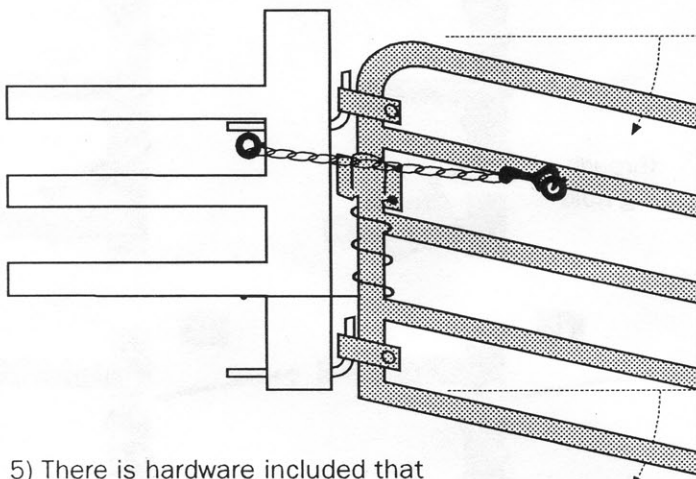
**Helpful Hint:**  
Install clamp loosely with gate closed, rotate until arm just contacts post. Then turn approximately 1/2", and tighten. Test operation and adjust as needed. A small amount of adjustment makes a large difference in tension.



### Side view

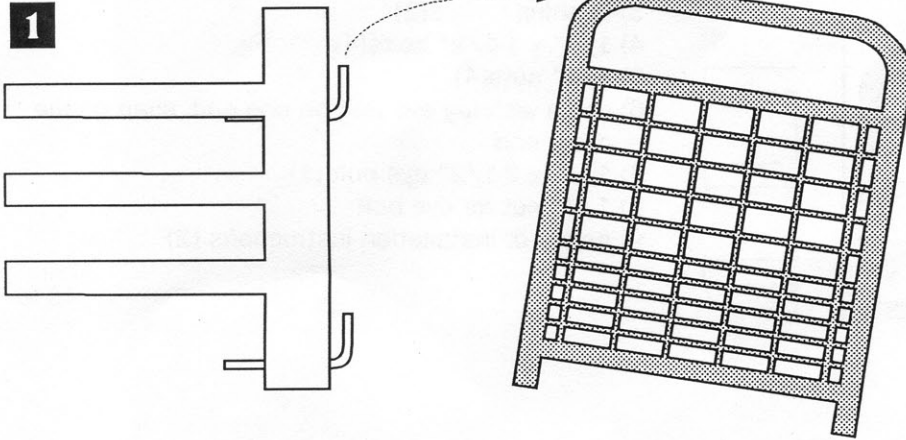
Adjust tension of the gate by twisting the clamp either way. There should be about a 3/4" space between the two clamps.

### (OPTIONAL)

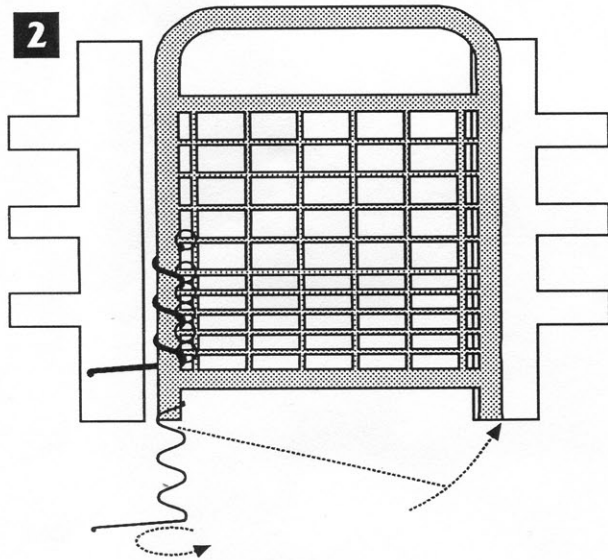


5) There is hardware included that allows the gate to be kept open. Fasten the lag bolt to the back of the post opposite the gate as shown. Open the gate 90 degrees, stretch out the chain along the gate pipe and mark out the position for the second eyebolt on the crossbar of the gate. Drill 1/4" hole and install the eyebolt, cutting off any excess from the back.

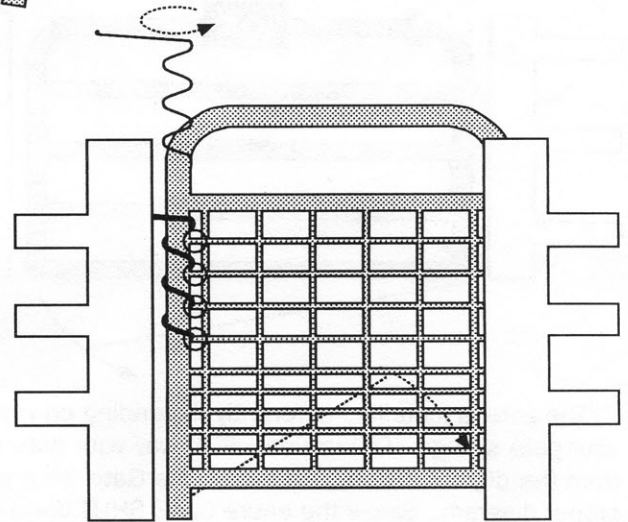
# Steel Mesh Gate



1) Remove gate completely from post and slide out of the way.

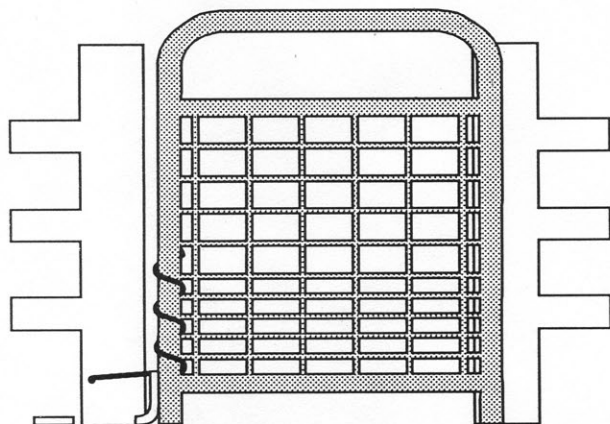


**OR**



2) The GATE SHUT can be installed two different ways. Determine which way your gate should swing and shut from the diagrams at left. Check to see that the GATE SHUT is installed in the proper position. Screw the entire GATE SHUT down around the gate, so that the spring does not interfere with the hinges. Remove any wires that interfere with the spring and the clamp with a hacksaw or sawzall (circled in diagram). Any protrusions left from this process should be filed smooth.

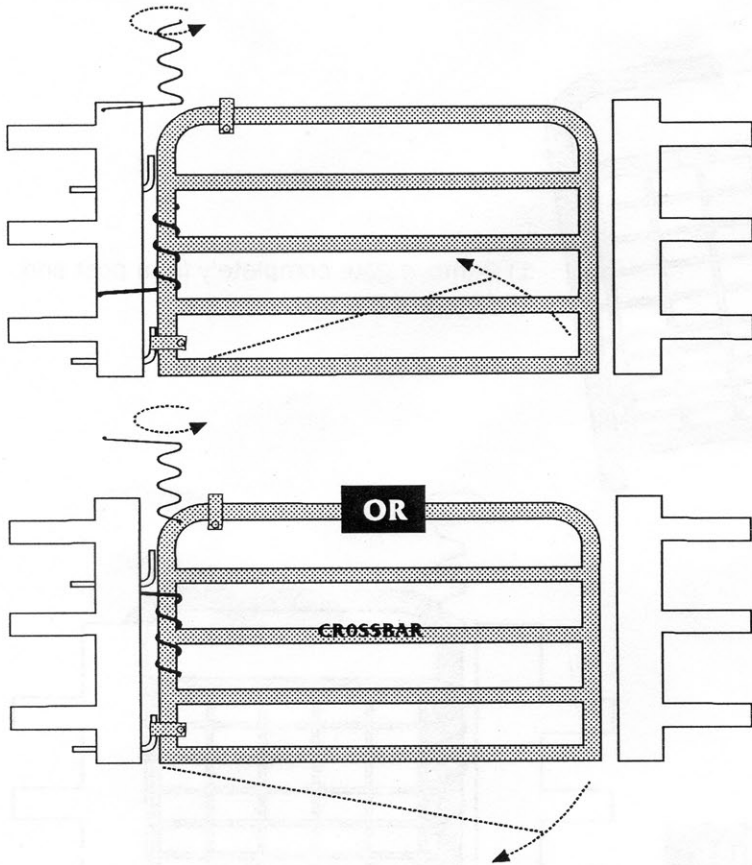
3) For instructions on clamp installation, refer to Standard Pipe Gate instructions, steps 3-5.



On some mesh gates, the hinge must be installed at the very bottom of the gate to avoid interference.



## FOR USE AS A GATE OPENER



2) The gate is installed differently depending on which way your gate swings. Determine which way your gate swings from the diagram above, and install the Gate Shut per the proper diagram. Screw the entire GATE SHUT down around the gate, so that the spring does not interfere with the hinges. Also, make sure that the spring does not rub against the crossbars of the gate after the clamp is tightened.