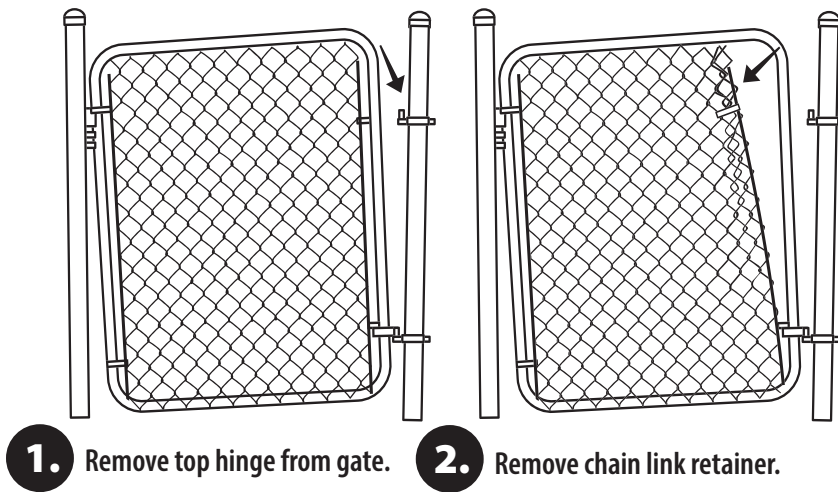
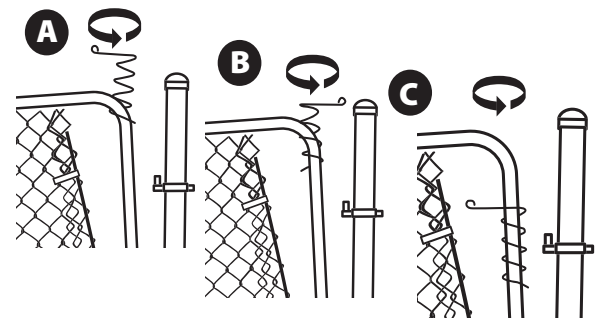


Chain Link Gate Shut Installation

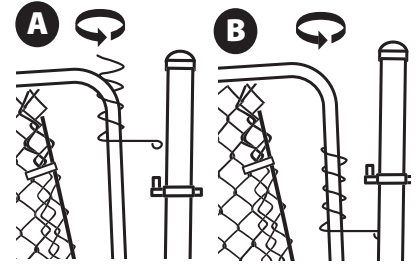


3. Rotate Gate Shut spring onto top corner of gate.

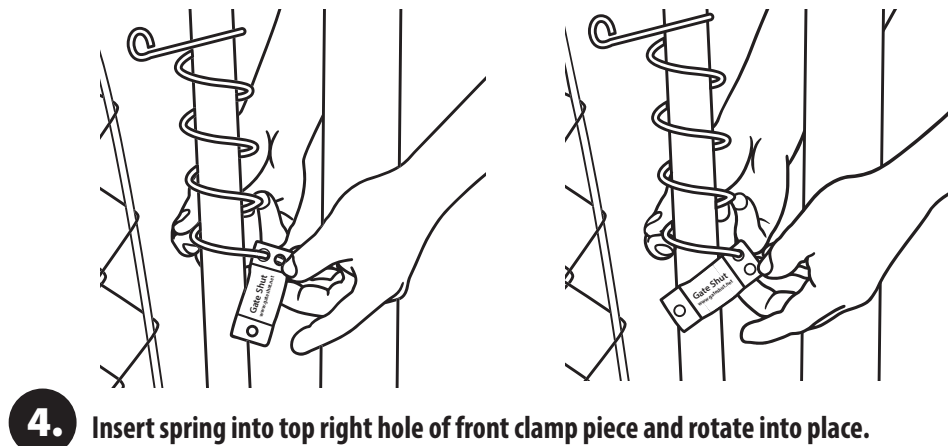


NOTE

To reverse the gate swing install spring with arm down onto top corner of gate.



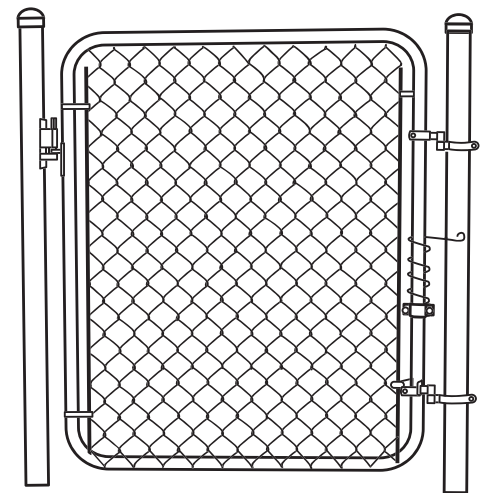
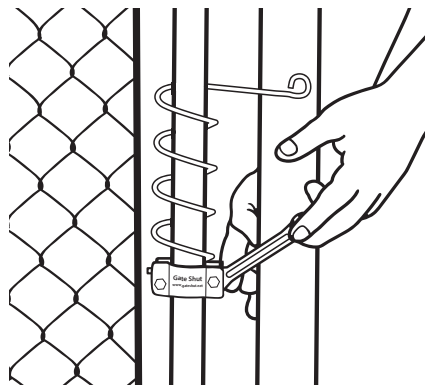
* Spring arm must be on the same side of post as gate swings out to work properly



6. Reinstall chain link retainer.

7. Reinstall top hinge on gate.

8. Rotate clamp to adjust spring tension and tighten bolts.



Final installed Gate Shut spring.

You can also watch the installation video on our website at: www.gateshut.net/gate-closer-videos